

RemoteAV

AIR VELOCITY SENSOR



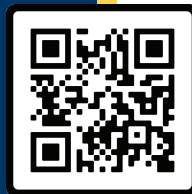
The Remote AV Sensor is the ideal solution for unidirectional flow and ventilation monitoring in cleanroom environments and for HVAC applications.


The Remote AV Sensor has a highly accurate sensor for measurement of low air velocity and is most suitable for cleanroom and controlled environment device monitoring such as isolators, cabinets, and biological safety cabinets.

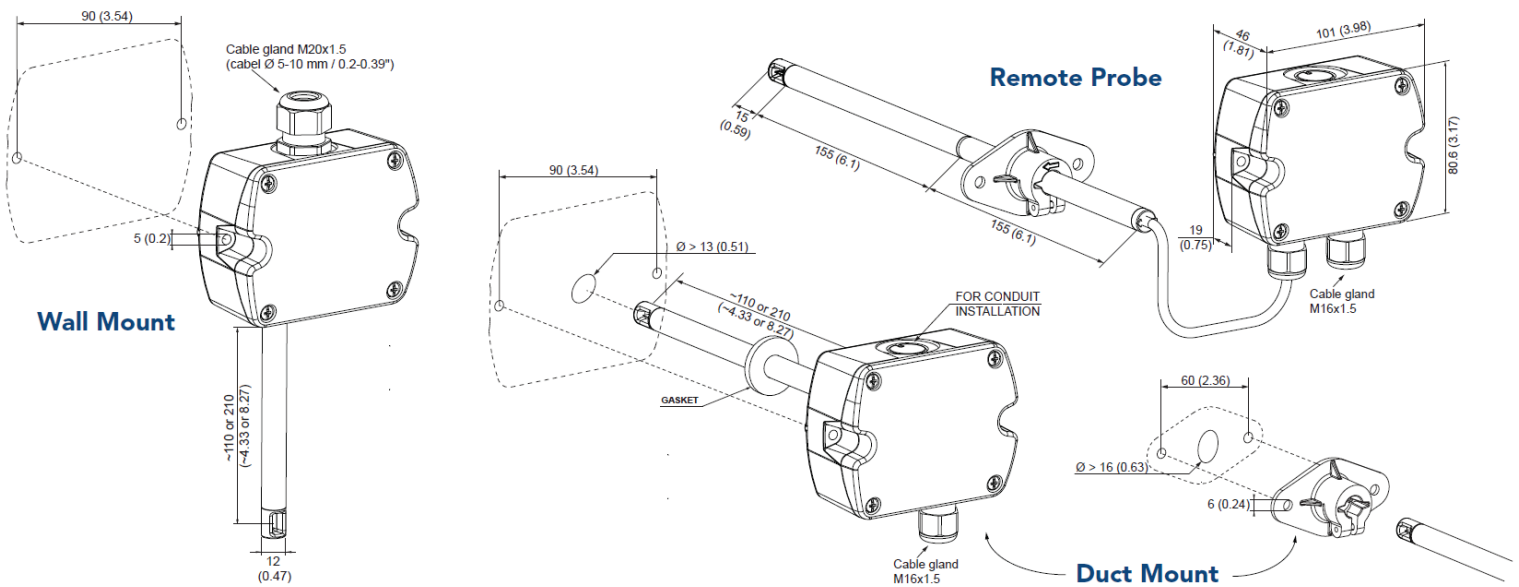
Only one CAT 5/6 cable is required for power and communications.

F E A T U R E S

- Multi-range measurement
- Smooth Cover and Cleanroom Friendly
- Simple On-site Installation
- Long Term Sensor Stability
- Bayonet Screws for Easy Access $\frac{1}{4}$ Turn Rotation
- IP65/NEMA Enclosure
- Wall Mounted or Duct Mounted
- 2 Year Warranty



 Learn More



TECHNICAL DATASHEET

RemoteAV Sensor Specifications

Features / Models	Remote Air Velocity Sensor
Working Range ¹⁾	0...1 m/s (0...200ft/min), 0...1.5 m/s (0...300ft/min), 0...2 m/s (0...400ft/min)
Output	4 - 20 mA
Accuracy at 20 °C (68 °F)	0.15...1.5 m/s (30...300 ft/min) \pm (0.05 m/s (9.8 ft/min) +2% of mv)
Response Time t_{90} ^{1) 2)}	Typ. 4 sec or typ. 1 sec (at constant temperature)
Power supply	24V AC/DC \pm 20%
Current consumption for AC supply	max. 180 mA rms (with display), 74 mA rms (without display)
Current consumption for DC supply	max. 85 mA rms (with display), 41 mA rms (without display)
Display	Optional
Angular dependence	< 3% of the measured value at $D\alpha < 10^\circ$
Electrical connection	Screw terminals max. 1.5 mm ² (AWG 16)
Cable gland	M16x1.5
Electromagnetic compatibility	EN61326-1, EN61326-2-3 - Industrial Environment
Housing material	Polycarbonate, UL94V-0 (with Display UL94HB) approved
Protection class	Enclosure IP65 / NEMA4, remote probe IP20
Working humidity and Temperature ranges	Relative Humidity 5...95 % non-condensing Working temperature probe -25 ... +50 °C (-13...122°F) Working temperature electronic -10 ... +50 °C (14...122°F) Storage temperature -30 ... +60 °C (-22...140°F)

1) Selectable by jumper

2) Response time t_{90} is measured from the beginning of a step change of air velocity to the moment of reaching 90% of the step.

Distributed By:



Lighthouse Worldwide Solutions reserves the right to change specifications without notice.